



UNIVERSITY OF CAMBRIDGE INTERNATIONAL EXAMINATIONS
General Certificate of Education Ordinary Level

CANDIDATE NAME

CENTRE NUMBER

CANDIDATE NUMBER



BIOLOGY **5090/32**
Paper 3 Practical Test **October/November 2013**
1 hour 15 minutes

Candidates answer on the Question Paper.
Additional Materials As listed in the Confidential Instructions.

READ THESE INSTRUCTIONS FIRST

Write your Centre number, candidate number and name on all the work you hand in.
Write in dark blue or black pen.
You may use a pencil for any diagrams, graphs or rough working.
Do not use staples, paper clips, highlighters, glue or correction fluid.
DO NOT WRITE IN ANY BARCODES.

Answer **all** questions.
At the end of the examination, fasten all your work securely together.
The number of marks is given in brackets [] at the end of each question or part question.
Electronic calculators may be used.

| For Examiner's Use | |
|--------------------|--|
| 1 | |
| 2 | |
| 3 | |
| Total | |

This document consists of **11** printed pages and **1** blank page.

In order to plan the best use of your time, read through all the questions on this carefully before starting work.

- 1 You are going to investigate the effect of two sugars on the activity of yeast.
Solution **A** is 10 cm³ of 10% glucose in water.
Solution **B** is 10 cm³ of 10% sucrose in water.

The activity of the yeast will be measured by counting the number of bubbles of gas that are released from an open tube placed below the water surface in a beaker of water.

- Take one small packet containing 3 g of dried yeast. Empty the contents into the test-tube containing solution **A**.
- Carefully shake the test-tube and place it into the large beaker of **warm** water provided.
- After approximately 5 minutes, when the mixture begins to froth, attach the bung with the delivery tube.
- Insert the open end of the delivery tube into the small beaker of water provided.

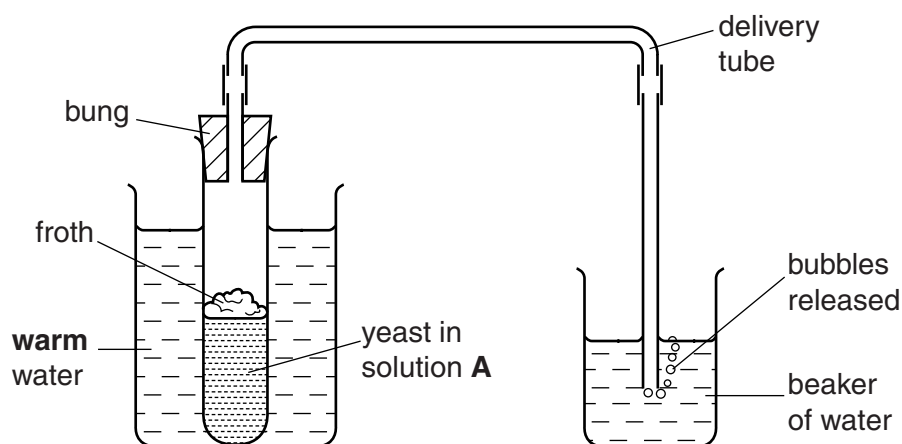


Fig. 1.1

- Count the number of bubbles released from the open end of the tube in one minute, and record your first count in Table 1.1.
- Shake the test-tube containing the active yeast mixture gently, and then count the number of bubbles released for a further minute. Record this second count in Table 1.1.
- Repeat the whole procedure with the second packet of yeast and solution **B**.

(a) (i)

Table 1.1

| solution | number of bubbles of gas released in one minute | |
|------------------------------|---|--------------|
| | first count | second count |
| A glucose in water | | |
| B sucrose in water | | |

[2]

(ii) Describe what your results show about the effect of glucose and sucrose on the activity of yeast.

.....

 [2]

(b) (i) State the name of the gas that was released to form the bubbles.

..... [1]

(ii) Describe a simple test for the gas you have named.

.....
 [2]

(iii) State the name of the process that was taking place in the yeast to produce this gas.

..... [1]

(c) (i) Suggest why the test-tubes were shaken between the two counts for each solution.

.....
 [1]

(ii) List the factors that were kept constant during this investigation.

.....
.....
.....
.....
.....
.....
.....[3]

Fig. 1.2 shows a yeast cell dividing.

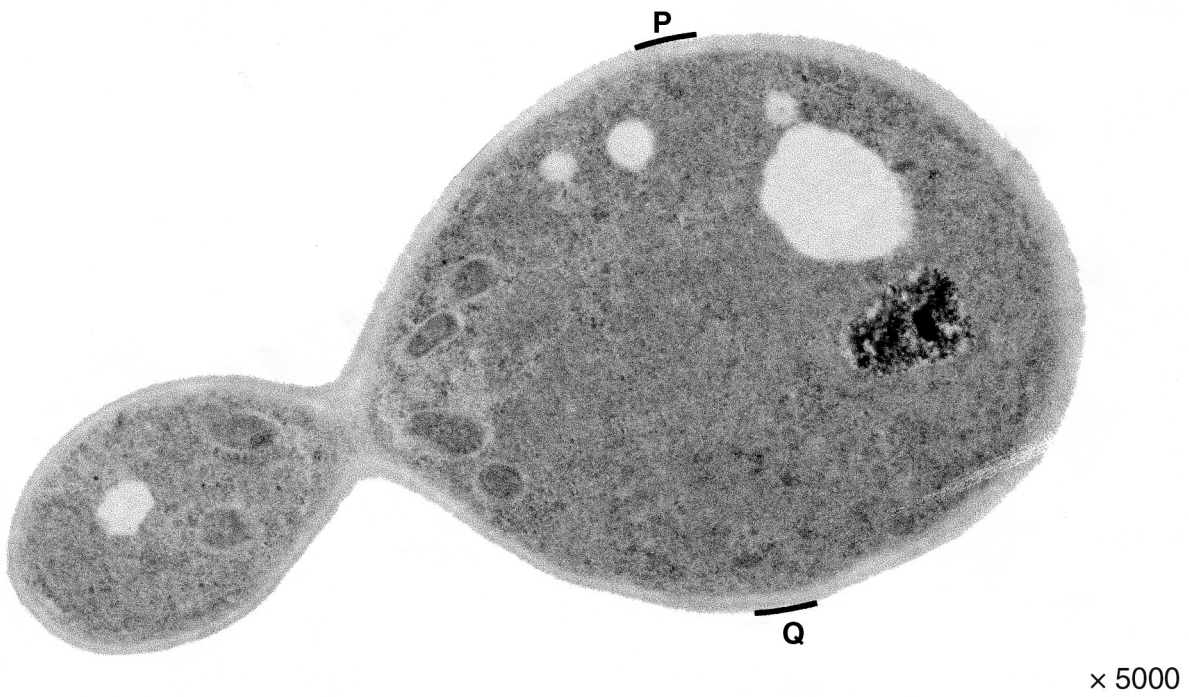
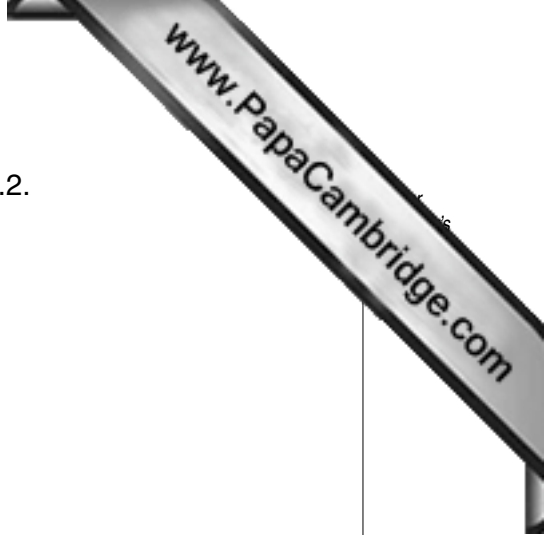


Fig. 1.2



(d) (i) Make a drawing of the yeast cell dividing shown in Fig. 1.2.

[4]

(ii) On Fig. 1.2, draw a line between the letters **P** and **Q**.

Measure and record this lengthmm

On your drawing, draw a line similar to the line **PQ**.

Measure and record this lengthmm

Calculate the magnification of your drawing compared to the actual size of the cell.

Show your working.

magnification × [5]

[Total: 21]

- 2 You are provided with a solution **C**, prepared from seeds soaked in water, ground and filtered.

You are provided with 'starch paper' in a Petri dish.

- Pour water onto this starch paper inside the Petri dish and drain away the excess.
- Add the dilute iodine solution to the wet starch paper so that it is evenly stained.
- Add water to the Petri dish and pour away all the liquid leaving the starch paper just damp.
- Remove three small discs of filter paper from the container, labelled '**filter paper discs**' and place into solution **C**.
- Using forceps carefully lift the three soaked filter paper discs from solution **C** and place them on the starch paper stained with iodine solution in the Petri dish, as shown in Fig. 2.1.

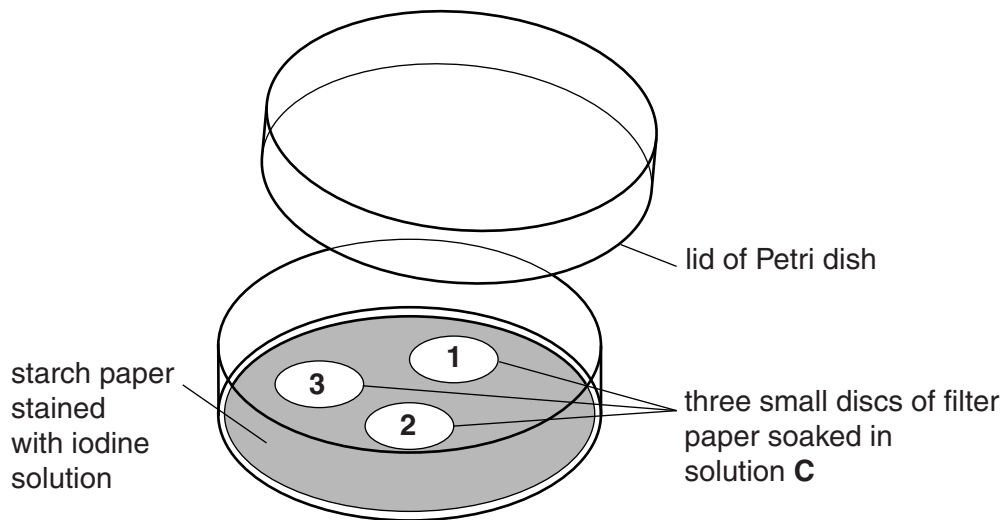


Fig. 2.1

- Place the lid on the Petri dish. Record the time
- Look carefully at the stained paper every minute, for up to 5 minutes and record your observations in Table 2.1.

(a) (i)

Table 2.1

| time /mins | observations | | |
|------------|--------------|----------|----------|
| | 1st disc | 2nd disc | 3rd disc |
| 0 | | | |
| 1 | | | |
| 2 | | | |
| 3 | | | |
| 4 | | | |
| 5 | | | |

[2]

- Look at the dish after 6 minutes. Measure the diameters of the zones around the filter paper discs that show a change in colour. Record your measurements in Table 2.2.

(a) (ii)

Table 2.2

| time /mins | diameter of zone/mm | | |
|------------|---------------------|----------|----------|
| | 1st disc | 2nd disc | 3rd disc |
| 6 | | | |

[1]

(b) (i) Suggest and explain what has happened to the starch around the discs.

.....

.....

.....

.....

.....

.....

..... [3]



(ii) Explain why seeds need the substance that has caused this to happen.

.....
.....
.....
.....
.....
.....
..... [3]

(c) Describe how this method could be used to compare the seeds from two different types of plant.

.....
.....
.....
.....
.....
..... [3]

[Total: 12]



Turn over for Question 3

3 Some students investigated the disease in rose bushes called Black Spot.

They collected 20 rose leaflets at random from rose bushes growing in an area where the air was polluted.

Fig. 3.1 shows these rose leaflets.

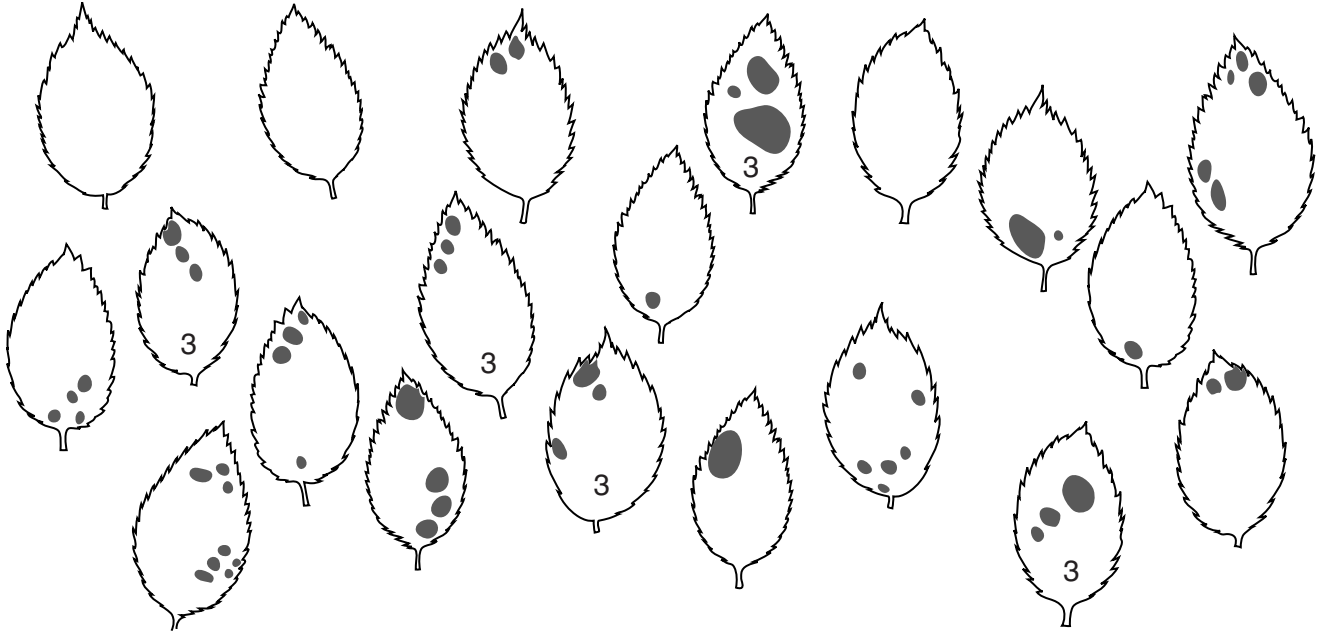


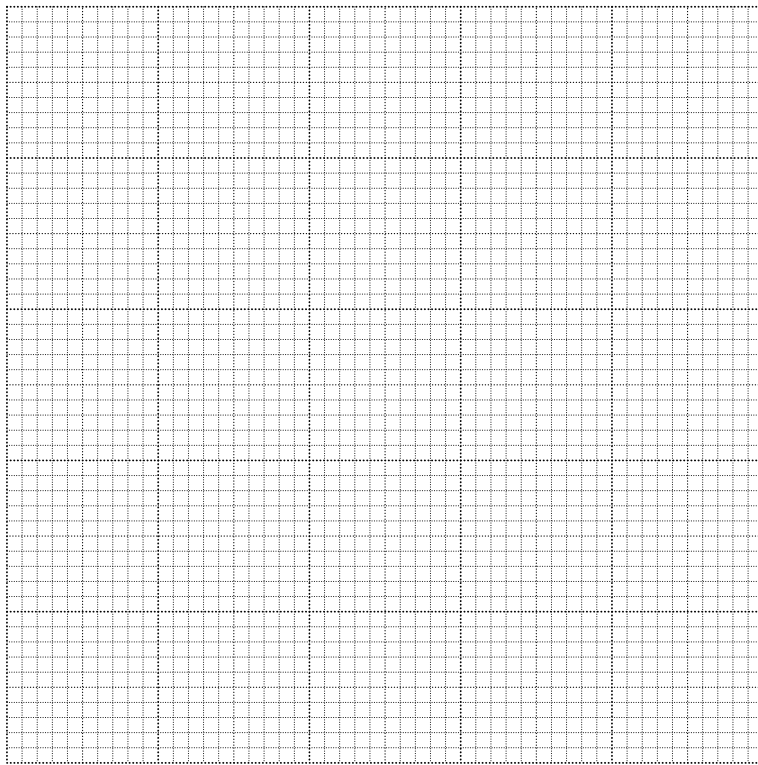
Fig. 3.1

(a) Count the number of spots on each leaflet shown in Fig. 3.1. There are 5 leaflets with 3 spots. Complete Table 3.1 for the other leaflets.

Table 3.1

| number of spots/leaflet | number of leaflets |
|-------------------------|--------------------|
| 0 | |
| 1 | |
| 2 | |
| 3 | 5 |
| 4 | |
| 5 | |
| 6 | |
| 7 | |
| 8 | |

(b) Construct a bar chart of the data in Table 3.1.



[3]

Fig. 3.2 shows another 20 rose leaflets collected from an area where the air was clean.

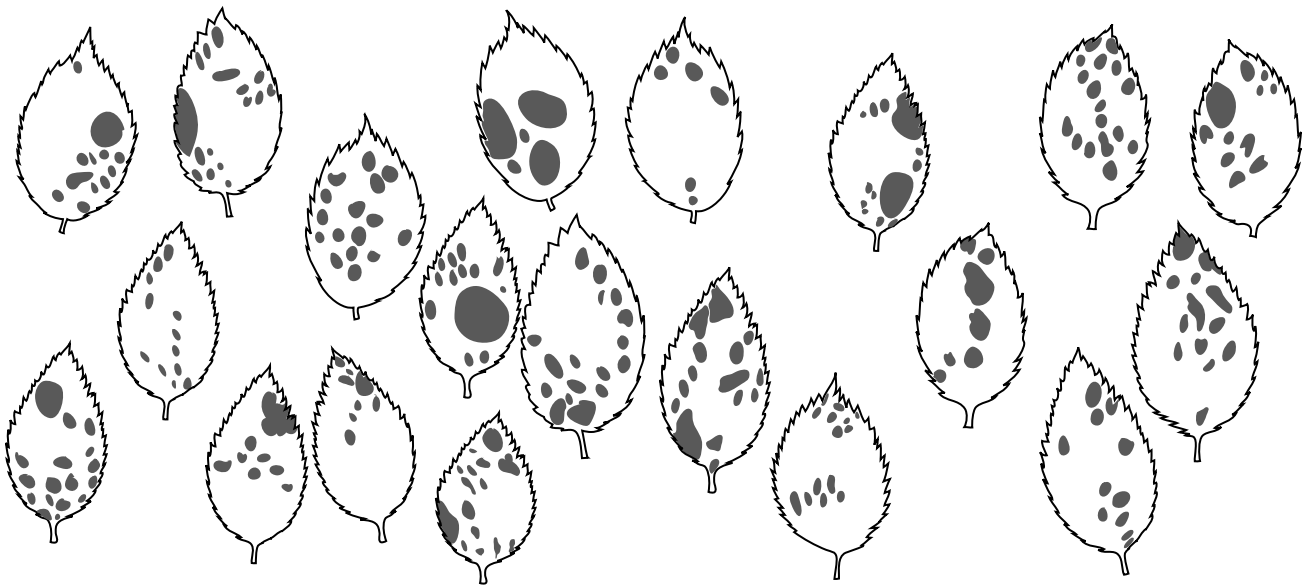
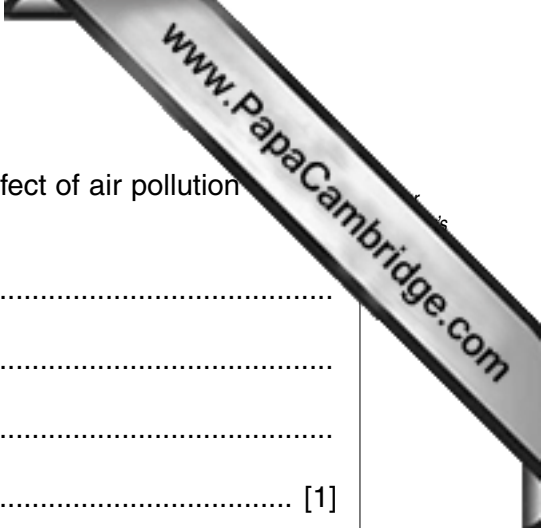


Fig. 3.2



(c) Using the information in Fig. 3.1 and Fig. 3.2, describe the effect of air pollution on disease.

.....
.....
.....
..... [1]

(d) Suggest **one** improvement to make this investigation more reliable.

.....
..... [1]

[Total: 7]

Permission to reproduce items where third-party owned material protected by copyright is included has been sought and cleared where possible. Every reasonable effort has been made by the publisher (UCLES) to trace copyright holders, but if any items requiring clearance have unwittingly been included, the publisher will be pleased to make amends at the earliest possible opportunity.

University of Cambridge International Examinations is part of the Cambridge Assessment Group. Cambridge Assessment is the brand name of University of Cambridge Local Examinations Syndicate (UCLES), which is itself a department of the University of Cambridge.