



UNIVERSITY OF CAMBRIDGE INTERNATIONAL EXAMINATIONS
General Certificate of Education Ordinary Level



FASHION AND FABRICS

6050/01

Paper 1 Theory

October/November 2012

INSERT

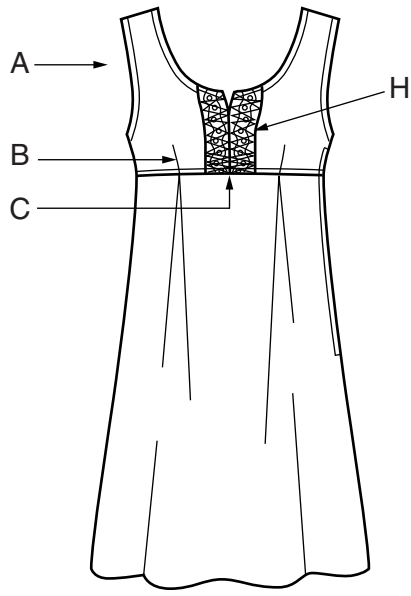
2 hours

READ THESE INSTRUCTIONS FIRST

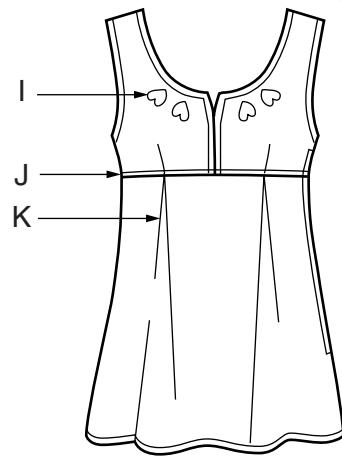
This Insert is for use with Questions 1 and 7.

This document consists of **3** printed pages and **1** blank page.

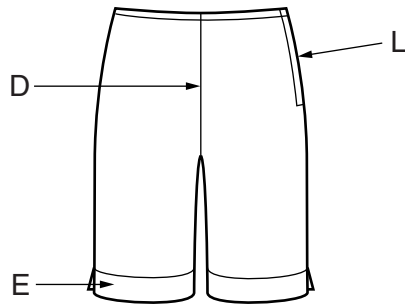




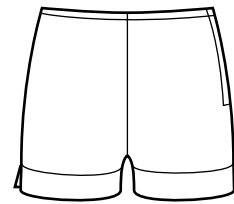
view A



view B



view C



view D

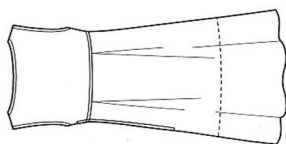


view E

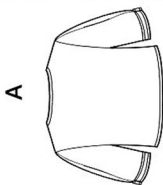
2939

14 PIECES/PIEZAS

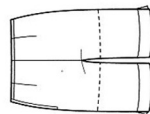
Métrages et Instructions de couture en Français à l'intérieur de l'enveloppe.



B



A



C

D

E

MISSSES / MISS PETITE MINI-DRESS OR TOP, SHORTS IN TWO LENGTHS AND JACKET

Fabrics: Cotton and Cotton Blends, Laundered Cottons, Soft Lightweight Linen and Linen Blends. A,B also in Eyelet, Double Georgette, Silks and Silk Types. B also on Handkerchief Linen, Gauze. C,D,E also in Lightweight Denim, Pique, Seersucker. Extra fabric needed to match plaids, stripes or one-way design fabrics.

Notions: Thread. A,B: One 12" zipper, one pkg. of 1/2" wide single fold bias tape. B: Two appliques (opt.). C,D: One 7" zipper, hook and eye, one pkg. of 1/2" wide twill tape. E: Two 3/4" buttons. Look for Simplicity notions and Wrights® Trims.

BODY MEASUREMENTS (For Sizing Help Visit www.simplicity.com)

Bust	29 1/2	30 1/2	31 1/2	32 1/2	34	36	38	40	42	In
Waist	22	23	24	25	26 1/2	28	30	32	34	"
Hip-9" below waist	31 1/2	32 1/2	33 1/2	34 1/2	36	38	40	42	44	"
Back-neck to waist	15 1/2	15 1/2	15 1/2	16	16 1/2	16 1/2	16 1/2	17	17 1/2	"
Pattern Size	4	6	8	10	12	14	16	18	20	
Sizes-European	30	32	34	36	38	40	42	44	46	

A Mini-Dress

45***	1 1/2	1 1/2	1 1/2	1 1/2	1 1/2	1 1/2	1 1/2	1 1/2	1 1/2	1 1/2	Yd
60***	1	1	1	1	1	1	1	1 1/2	1 1/2	1 1/2	"

Flat Lace (opt.) 1/2 yd. of 1 1/2" wide

B Top

45***	1 1/2	1 1/2	1 1/2	1 1/2	1 1/2	1 1/2	1 1/2	1 1/2	1 1/2	1 1/2	Yd
60***	1	1	1	1	1	1	1	1 1/2	1 1/2	1 1/2	"

A,B Interfacing 1/2 yd. of 20" to 25" lightweight fusible

C Shorts- worn 1" below waist

45***	1 1/2	1 1/2	1 1/2	1 1/2	1 1/2	1 1/2	1 1/2	1 1/2	1 1/2	1 1/2	Yd
60***	1	1	1	1	1	1	1	1 1/2	1 1/2	1 1/2	"

D Shorts- worn 1" below waist

45***	3/4	3/4	3/4	3/4	3/4	3/4	3/4	3/4	3/4	3/4	Yd
60***	3/4	3/4	3/4	3/4	3/4	3/4	3/4	3/4	3/4	3/4	"

E Jacket

45***	1	1	1 1/2	1 1/2	1 1/2	1 1/2	1 1/2	1 1/2	1 1/2	1 1/2	Yd
60***	1	1	1	1	1 1/2	1 1/2	1 1/2	1 1/2	1 1/2	1 1/2	"

Interfacing 3/4 yd. of 20" to 25" lightweight fusible

FINISHED GARMENT MEASUREMENTS (Includes Design and Wearing Ease)

A,B Bust	31 1/2	32 1/2	33 1/2	34 1/2	36	38	40	42	44	In
C,D Hip	34	35	36	37	38 1/2	40	42	44	46	"
E Bust	35	36	37	38	39 1/2	41 1/2	43 1/2	45 1/2	47 1/2	"
Finished back length from base of neck:										
A	33 1/2	33 1/2	33 1/2	34	34 1/2	34 1/2	34 1/2	35	35 1/2	In
C Side Length	18 1/2	18 1/2	18 1/2	19	19 1/2	19 1/2	19 1/2	20	20 1/2	"
A Width	47 1/2	48 1/2	49 1/2	50 1/2	52	54	56	58	60	"

*without nap **with nap ***with or without nap

JEUNE FEMME/PETITE JEUNE FEMME: MINIROBE OU HAUT, SHORT EN DEUX LONGUEURS ET VESTE

Tissus: Coton et Cotonnades, Cotons prélavés, Toile de lin et mélanges de lins souples et légers. A,B aussi en Dentelle de broderie anglaise, Crêpe Georgette double, Soies et tissus soyeux. B aussi en lin très fin, Gaze. C,D,E aussi en Denim léger, Piqué, Seersucker. Prévoyez davantage de tissu pour raccorder les écosais, rayures ou motifs unidirectionnels.

Merci: Fil. A,B: une glissière de 30cm, un paquet de biais de 1.3cm de large. B: Deux applications (facult.). C,D: Une glissière de 18cm, une agrafe, un paquet de talonnette de 1.3cm de large. E: Deux boutons de 2cm. Demandez la mercerie Simplicity et les garnitures de Wrights® Trims.

SEÑORITAS/SEÑORITAS PEQUEÑAS: MINIVESTIDO O BLUSA, SHORT EN DOS LARGOS Y CHAQUETA

Telas: Algodón y mezclas de algodones, Algodones lavados, Lino y mezclas de lino suaves y finos. A,B también en encaje para bordado inglés, Crépé Georgette doble, Sedas y mezclas de sedas. B también en Lino muy fino, Gasa. C,D,E también en Drill ligero, Piqué, Seersucker. Se necesita tela adicional para casar cuadros, rayas o telas estampadas en una dirección.

Merci: Hilos. A,B: una cremallera de 30cm, un paquete de bias sencillo de 1.3cm de ancho. B: Dos aplicaciones (opcional). C,D: una cremallera de 18cm, un corchete, un paquete de galón asargado de 1.3cm de ancho. E: Dos botones de 2cm. Pida la mercería Simplicity y adornos de Wrights® Trims.

MESURES NORMALISEES/MEDIDAS DEL CUERPO

Poitrine/Busto	75	78	80	83	87	92	97	102	107	cm
Taille/Cintura	56	58	61	64	67	71	76	81	87	"
Hanches (23cm au-dessous de la taille)/Caderas (23cm abajo de la cintura)	80	83	85	88	92	97	102	107	112	"
Dos (encolure à taille)/Espalda (escote a cintura)	38.5	39.5	40	40.5	41.5	42	42.5	43	44	"

Tailles / Tallas

Tailles-Françaises

Tallas-Europeas

A Minirobe/ A Minivestido

115cm**	1.80	1.80	1.80	1.80	1.80	1.90	1.90	1.90	1.90	m
150cm**	1.40	1.40	1.40	1.40	1.40	1.40	1.40	1.40	1.40	"

Dentelle (facult.)- 0.50m de 3.8cm de large / Encaje (opcional)- 0.50m de 3.8cm de ancho

B Haut/ B Blusa

115cm**	1.40	1.40	1.40	1.40	1.40	1.40	1.40	1.40	1.40	m
150cm**	0.90	0.90	0.90	0.90	0.90	1.00	1.00	1.00	1.10	"

A,B Entoilage- 0.50m de 51cm à 64cm léger, thermocollant

A,B Entretela- 0.50m de 51cm à 64cm légère, adhesiva

C Short- se porte à 2.5cm au-dessous de la taille / C Short- se lleva 2.5cm abajo de la cintura

115cm**	1.00	1.00	1.00	1.10	1.30	1.30	1.30	1.30	1.30	m
150cm**	0.70	0.70	0.70	0.70	0.70	0.70	0.70	0.70	1.10	"

D Shorts- se porte à 2.5cm au-dessous de la taille/ D Short- se lleva 2.5cm abajo de la cintura

115cm**	0.70	0.70	0.80	0.90	1.00	1.00	1.00	1.00	1.00	m
150cm**	0.50	0.50	0.60	0.60	0.60	0.60	0.60	0.70	0.80	"

E Veste/ E Chaqueta

115cm**	1.30	1.30	1.30	1.30	1.40	1.40	1.40	1.40	1.40	m
150cm**	0.90	0.90	0.90	0.90	1.00	1.00	1.00	1.10	1.20	"

Entoilage- 0.70m de 51cm à 64cm léger, thermocollant

Entretela- 0.70m de 51cm à 64cm légère, adhesiva

*sans sens **avec sens ***avec ou sans sens **sin pelusa ***con o sin pelusa

Visit www.simplicity.com • Email info@simplicity.com • Call toll-free U.S. & Canada 1-888-588-2700

www.PapaCambridge.com

Permission to reproduce items where third-party owned material protected by copyright is included has been sought and cleared where possible. Every reasonable effort has been made by the publisher (UCLES) to trace copyright holders, but if any items requiring clearance have unwittingly been included, the publisher will be pleased to make amends at the earliest possible opportunity.

University of Cambridge International Examinations is part of the Cambridge Assessment Group. Cambridge Assessment is the brand name of University of Cambridge Local Examinations Syndicate (UCLES), which is itself a department of the University of Cambridge.