



UNIVERSITY OF CAMBRIDGE INTERNATIONAL EXAMINATIONS
 General Certificate of Education
 Ordinary Level



FASHION AND FABRICS

6050/02

Paper 2 Practical Test

October/November 2011

2 hours 30 minutes

Additional Materials:

Sewing equipment
 Fabric
 Pattern
 Interfacing
 Scissors

Sewing thread to match fabric
 Tacking thread
 Pencil
 Ruler
 Button



This document consists of **5** printed pages and **3** blank pages.



Materials provided

- (a) Butterick pattern **3475**, size **2-3-4-5**.
An illustration of the boy's shirt, **view B**, is on the envelope containing the pattern.
- (b) A piece of fabric 90 cm wide and 42 cm long.
- (c) A piece of lightweight iron-on interfacing 17 cm wide and 42 cm long.
- (d) One 13 mm, two holed button.
- (e) Sewing thread to match the fabric.
- (f) Tacking thread.

For this test you are to prepare the pattern and make up the **right half** of the shortened shirt, **size 5**, **view B**, attaching the pocket to the right front, sewing on a button, but, **omitting** the sleeve. Before you begin you should study the question paper carefully together with the illustration, the pattern and the fabric.

This is a multi-sized pattern. The cutting line for **size 5** is shown by **the outer black solid line**.

A seam allowance of 1.5 cm is allowed within the pattern although it is not marked.

THE LABEL

Candidate's name

.....

Centre No./Candidate No.

..... /

The Test

1 Preparation

- (a) Write your name and candidate number on the envelope provided.
- (b) Select and separate pattern pieces 1, 2, 3, 4 and 6 (buttonhole guide) for the shirt.
- (c) On pattern pieces 1 and 3 measure down 10 cm from the lengthening and shortening lines, with a ruler draw a line across and cut off the bottom of the pieces along these lines.

2 Cutting out

- (a) Place the pattern pieces 1, 2, 3 and 4 on the fabric as shown in the layout. For the purpose of this test, place pattern piece 3 to the selvedge. On pattern piece 4, the collar, use the 'place on fold line' as the straight grain line.
- (b) Cut out the **right half** of the shortened shirt and the pocket.
- (c) Transfer the pattern markings which are needed for making up this test.
- (d) On pattern piece 1, the front, cut the front facing off along the fold line, and use this as the pattern piece for the interfacing.
- (e) Cut out the interfacing for the collar and the front facing as shown in the layout.

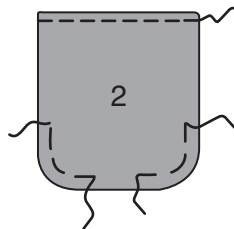
3 Making up

It is important that pressing is done at all stages.

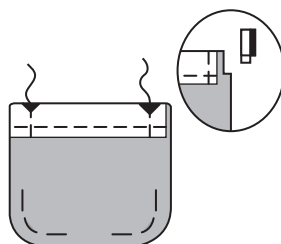
Make up the **right half** of the shortened shirt as follows:

(a) Pocket

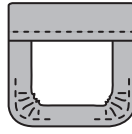
- (i) Neaten the upper edge of the pocket.
- (ii) Ease stitch the curved edges of the pocket 10 mm from the edge. See diagram.



- (iii) Turn the upper edge to the outside along fold line. Stitch the ends and trim.



- (iv) Turn the upper edge of the pocket to the inside and finish making up the pocket. See diagram.



- (v) Place the pocket in position on the shirt front. Edge stitch the pocket and strengthen the corners.
- (vi) Secure the ends of machine stitching by hand.

(b) Facing

- (i) Fuse the interfacing to the facing.
- (ii) Neaten the unnotched edge of the facing.

(c) Shoulder seam

Work the shoulder seam.

(d) Collar

- (i) Fuse the interfacing to one collar piece.
- (ii) Make up the collar.

(e) Attaching the collar

- (i) Attach the collar to the neckline using the front facing.
- (ii) Secure the front facing to the shoulder seam on the wrong side.
- (iii) Tack the facing in place along the front fold line. **Do not** remove this tacking at the end of the test.

(f) Side seam

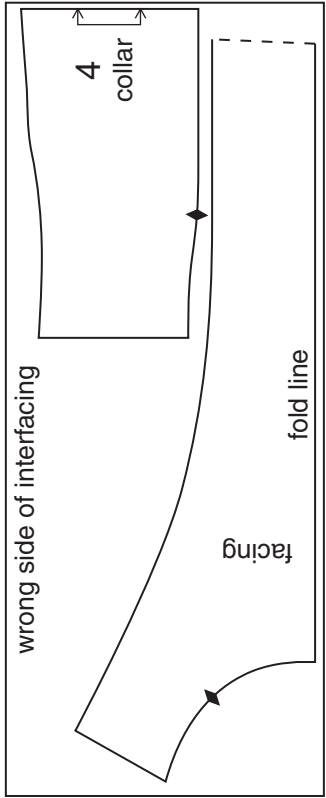
Work the side seam.

(g) Button

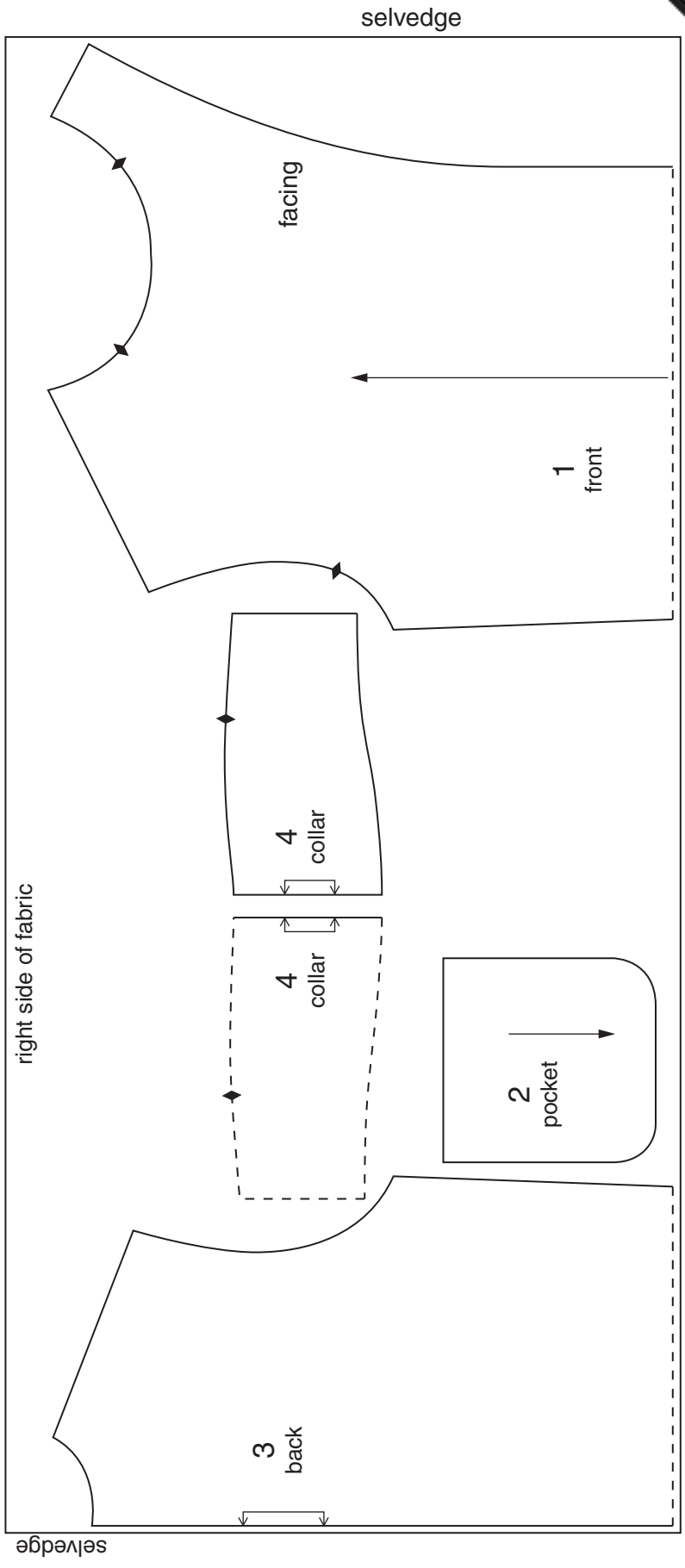
- (i) Using pattern piece 6, the button/buttonhole guide, mark the positions of the **two** top buttons.
- (ii) Sew the button on at the top position.

At the end of the examination remove the needle and unnecessary pins from your work. Write your name and candidate number on the label provided. Cut out the label and tack it to your test. The label should not cover any stitching and should be on **single** fabric. Press your work, fold it carefully and place it in the envelope provided. **Do not** include the pattern or the scraps of fabric you have left over.

Layout for interfacing



Layout for 90 cm wide fabric



Note: for the purpose of this test (i) place pattern piece 3 to the selvedge; (ii) on pattern piece 4 use the 'place on the fold line' as the straight grain line; (iii) turn the collar pattern over (piece 4) to cut the under collar.

Permission to reproduce items where third-party owned material protected by copyright is included has been sought and cleared where possible. Every reasonable effort has been made by the publisher (UCLES) to trace copyright holders, but if any items requiring clearance have unwittingly been included, the publisher will be pleased to make amends at the earliest possible opportunity.

University of Cambridge International Examinations is part of the Cambridge Assessment Group. Cambridge Assessment is the brand name of University of Cambridge Local Examinations Syndicate (UCLES), which is itself a department of the University of Cambridge.