

ART HISTORY (PRINCIPAL)

Paper 1 Analytical Studies in Western and non-Western Art

9799/01

May/June 2016

1 hour 30 minutes

Additional Materials: Answer Booklet/Paper



READ THESE INSTRUCTIONS FIRST

If you have been given an Answer Booklet, follow the instructions on the front cover of the Booklet.

Write your Centre number, candidate number and name on all the work you hand in.

Write in dark blue or black pen.

Do not use staples, paper clips, glue or correction fluid.

DO NOT WRITE IN ANY BARCODES.

This paper contains four sections.

Answer **all** the questions from any **three** sections.

All questions carry equal marks.

At the end of the examination, fasten all your work securely together.

The syllabus is approved for use in England, Wales and Northern Ireland as a Cambridge International Level 3 Pre-U Certificate.

This document consists of **5** printed pages and **3** blank pages.

Answer **all** the questions from any **three** sections.

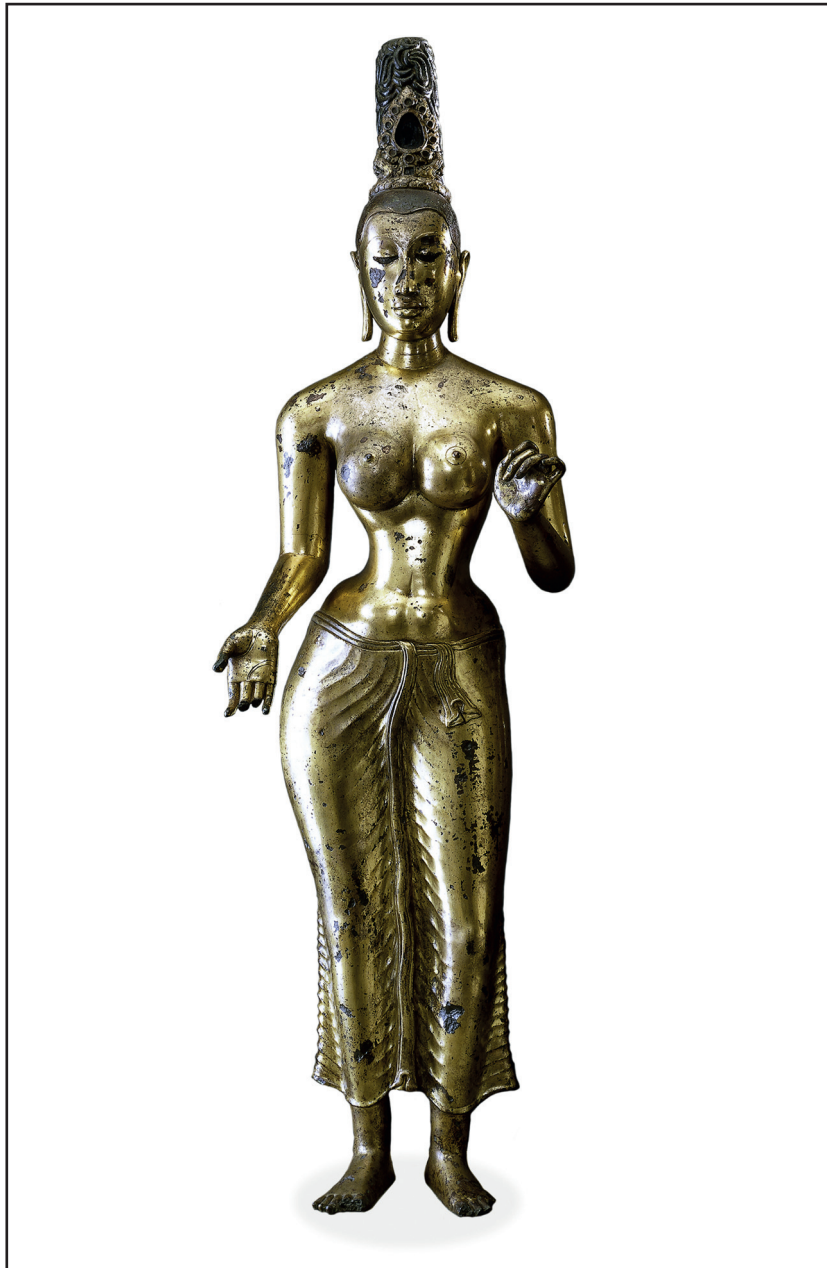
Section 1: Painting



Pablo Picasso, *Les Femmes d'Alger (O.K. Version)*, 1911-12, (oil on canvas), (244 cm × 234 cm), (Museum of Modern Art, New York)

- 1 (a) Examine the composition, space, line and colour of this painting. [10]
- (b) Discuss the subject of this work and the art that influenced Picasso during its creation. [10]

Section 2: Sculpture



Tara, Bodhisattva bronze, 700–750 AD, (bronze), (143 cm × 44 cm × 29.5 cm), (British Museum)

- 2 (a) Describe the materials and form of this sculpture. [10]
- (b) What was the religious and cultural context of this work? [10]

Section 3: Architecture



Andrea Palladio, *Villa Rotonda*, 1592, Vicenza, Italy

- 3 (a) Describe the structure and architectural features of this building. [10]
- (b) Discuss the sources for this building and the influence the Villa Rotonda had on subsequent architecture. [10]

Section 4: Drawing, printing, photography, collage and film

Joseph Mallord William Turner, *Venice: Looking East towards San Pietro di Castello – Early Morning*, 1819, (watercolour on paper), (223 mm × 287 mm), (Tate)

- 4 (a) Analyse Turner's use of watercolour. [10]
- (b) How are Turner's concerns as an artist reflected in this work? [10]

BLANK PAGE

Permission to reproduce items where third-party owned material protected by copyright is included has been sought and cleared where possible. Every reasonable effort has been made by the publisher (UCLES) to trace copyright holders, but if any items requiring clearance have unwittingly been included, the publisher will be pleased to make amends at the earliest possible opportunity.

To avoid the issue of disclosure of answer-related information to candidates, all copyright acknowledgements are reproduced online in the Cambridge International Examinations Copyright Acknowledgements Booklet. This is produced for each series of examinations and is freely available to download at www.cie.org.uk after the live examination series.

Cambridge International Examinations is part of the Cambridge Assessment Group. Cambridge Assessment is the brand name of University of Cambridge Local Examinations Syndicate (UCLES), which is itself a department of the University of Cambridge.