



Cambridge International Examinations  
Cambridge Pre-U Certificate

---

**GEOGRAPHY (PRINCIPAL)**

**9768/03**

Paper 3 Geographical Issues

**May/June 2016**

INSERT

**2 hours 45 minutes**

---



**READ THESE INSTRUCTIONS FIRST**

This Insert contains all the Figures referred to in the questions.

---

The syllabus is approved for use in England, Wales and Northern Ireland as a Cambridge International Level 3 Pre-U Certificate.

---

This document consists of **8** printed pages.

Fig. 1 for Question 1

**Volcanic hazards associated with the May 1980 eruption of Mount St Helens, Washington State, USA**

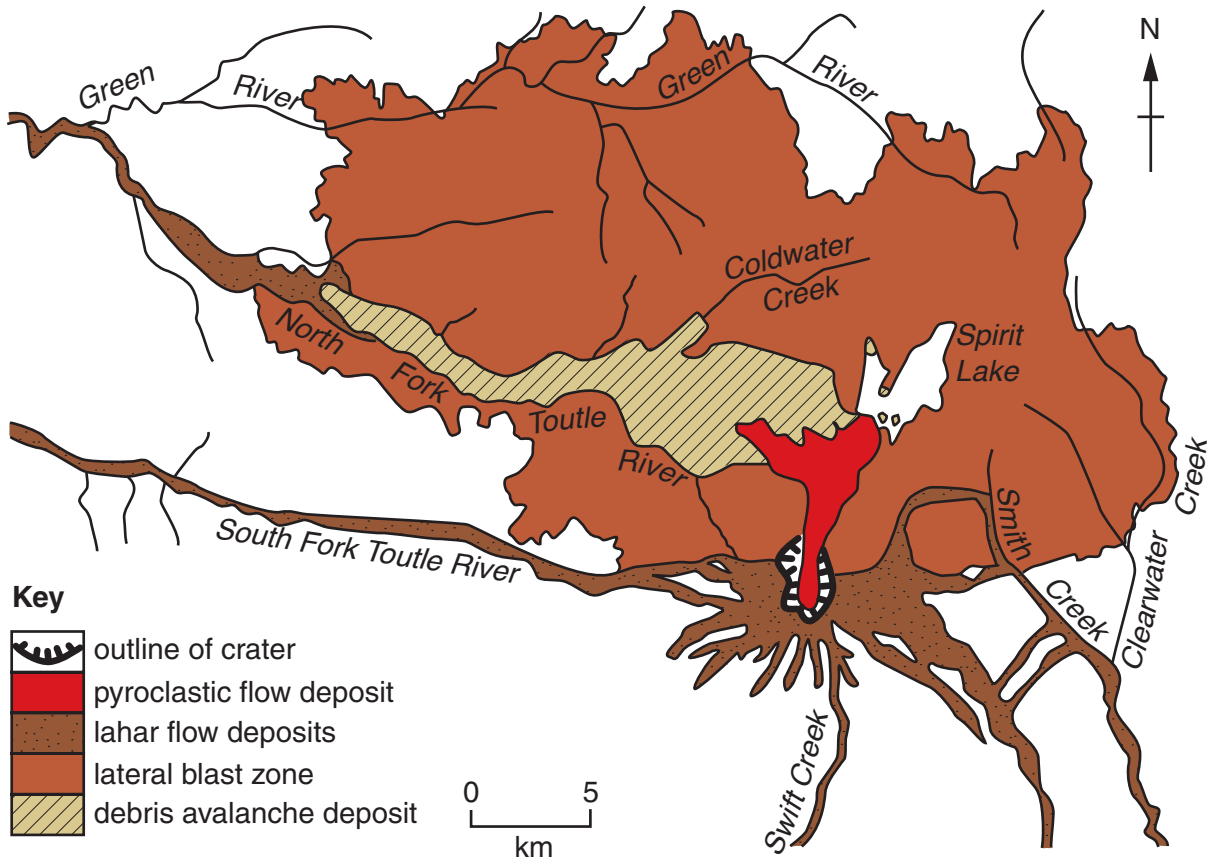


Fig. 2 for Question 1

**An illustration of some methods of predicting volcanic eruptions**

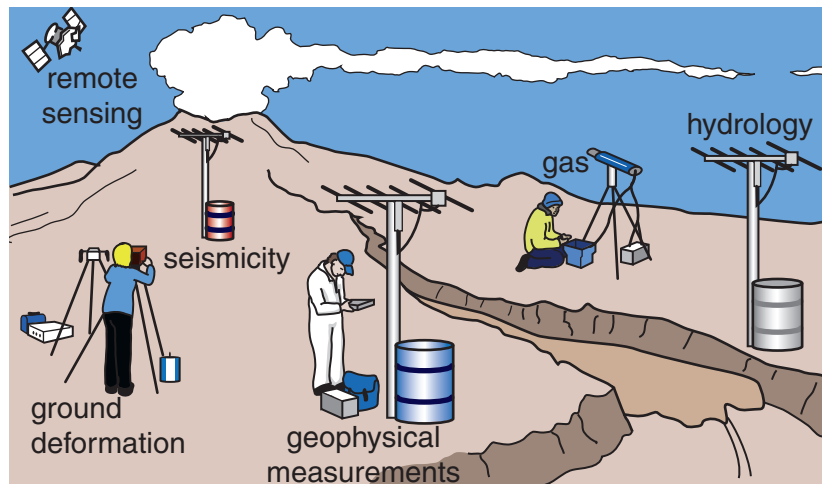


Fig. 3 for Question 2

A drought map for mainland USA, excluding Alaska, 2013

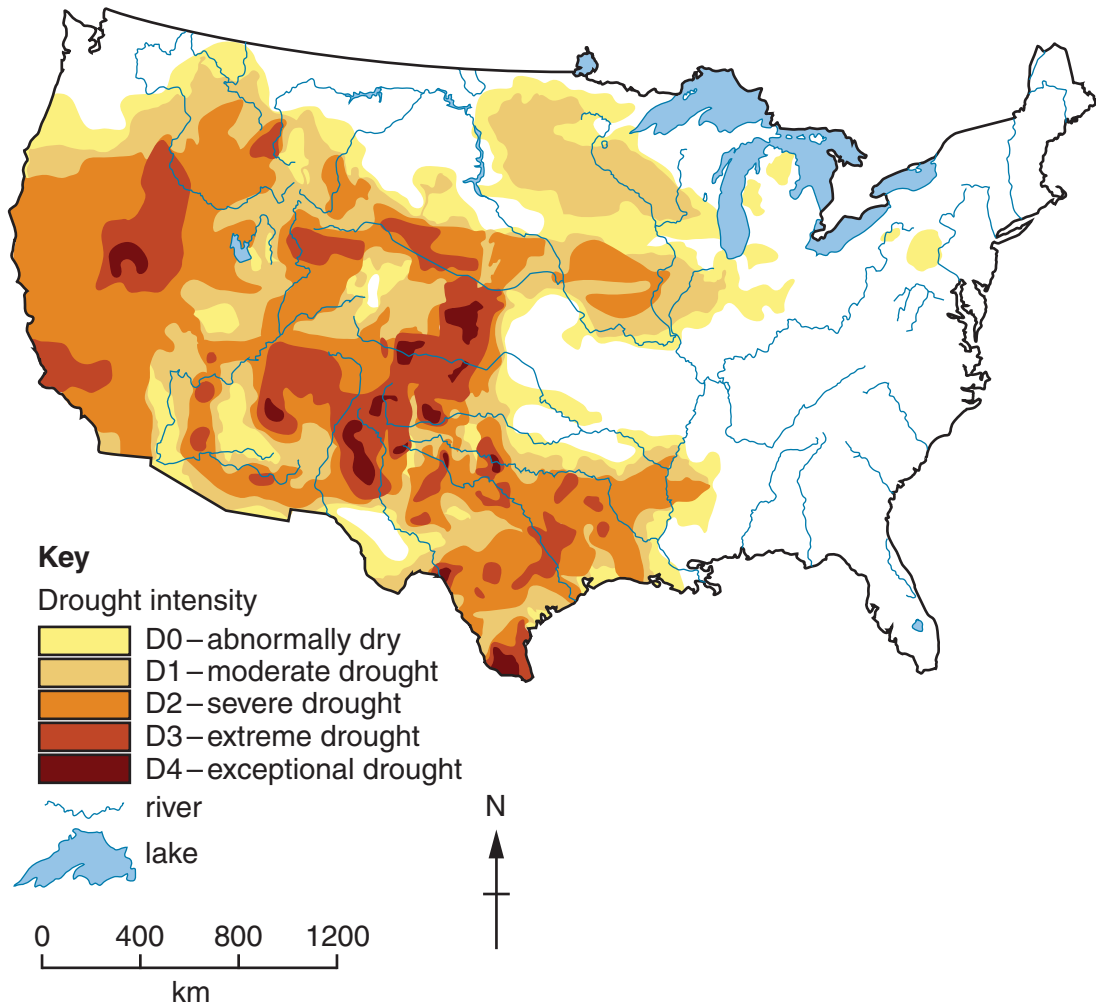


Fig. 4 for Question 3

The storm hydrograph for the flood event of 16th August 2004  
at Boscastle, England

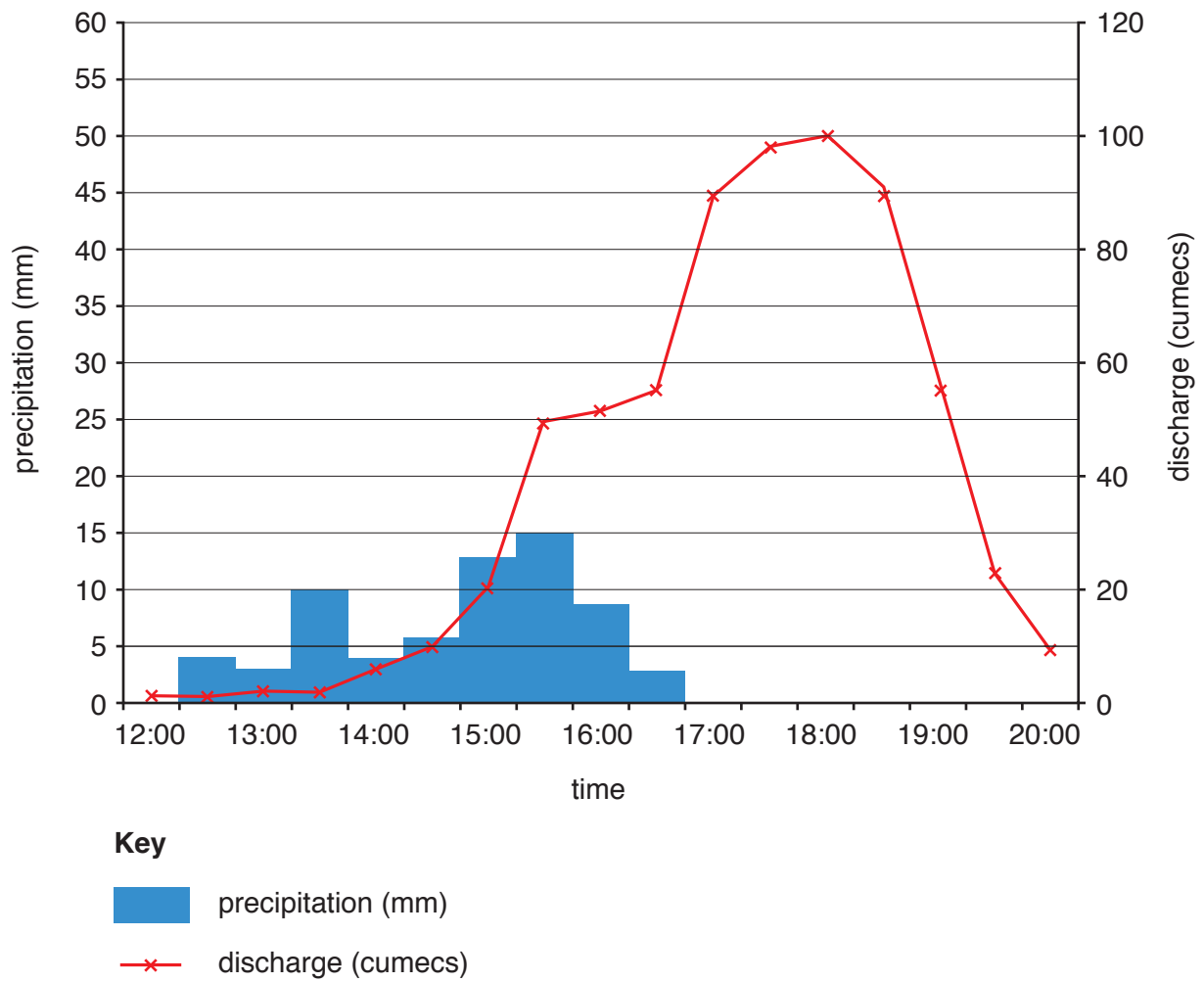


Fig. 5 for Question 3

Modifications made after the Boscastle 2004 flood event

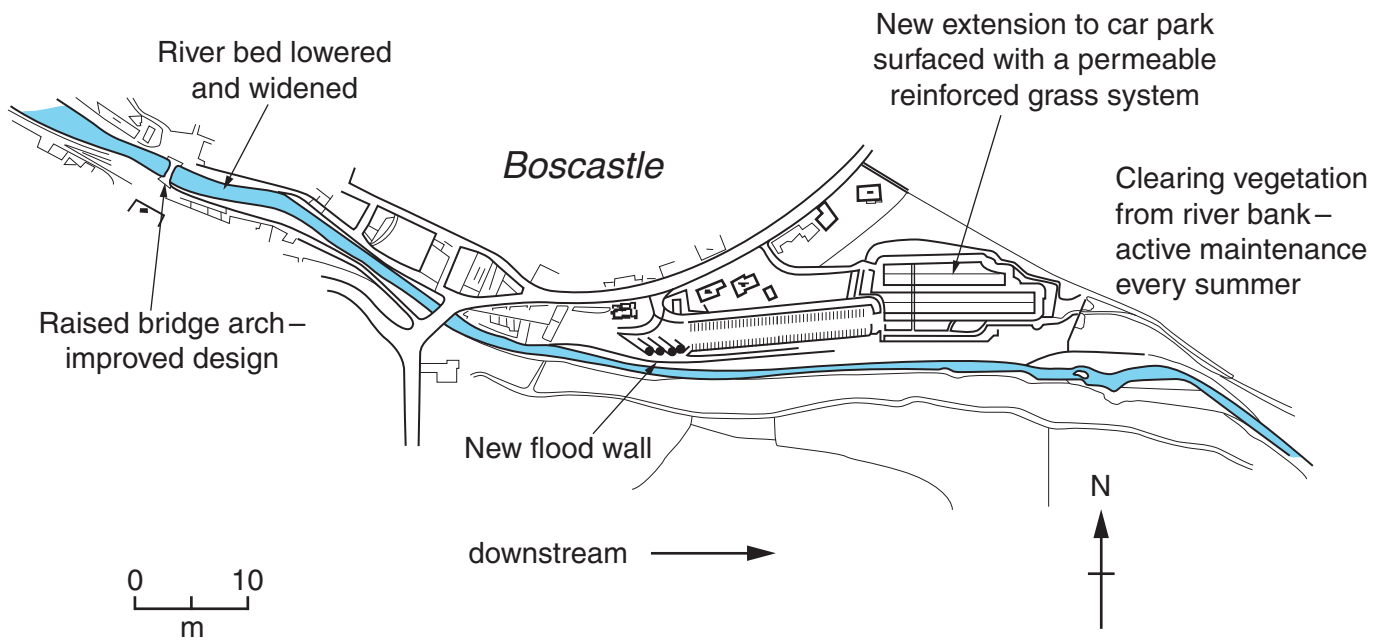


Fig. 6 for Question 4

The percentages of firearms offences in three police force areas and the rest of England with the population percentages of these areas, 2011–12

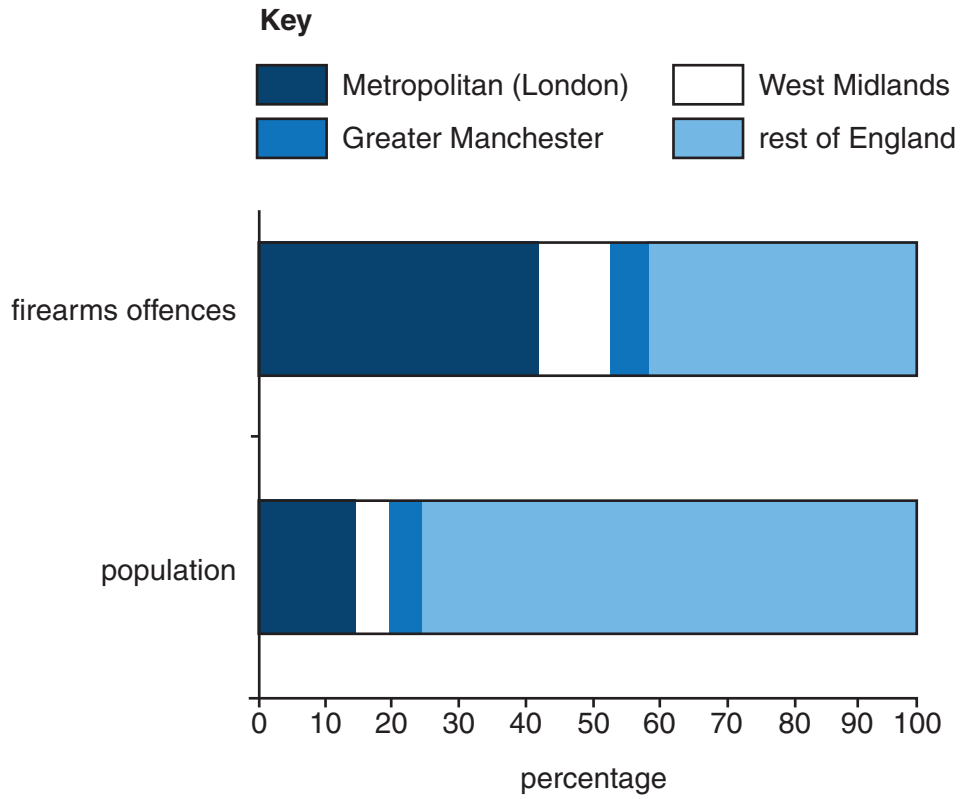


Fig. 7 for Question 5

The number of confirmed cases of Ebola in West Africa  
between March and June 2014

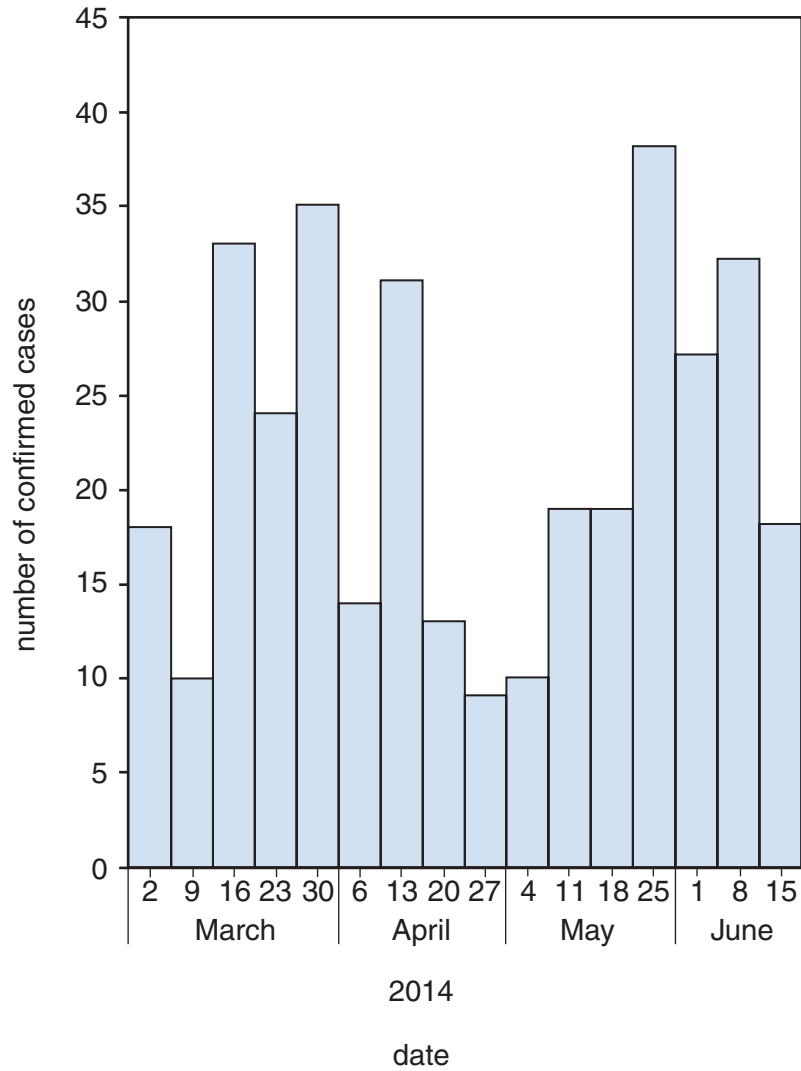
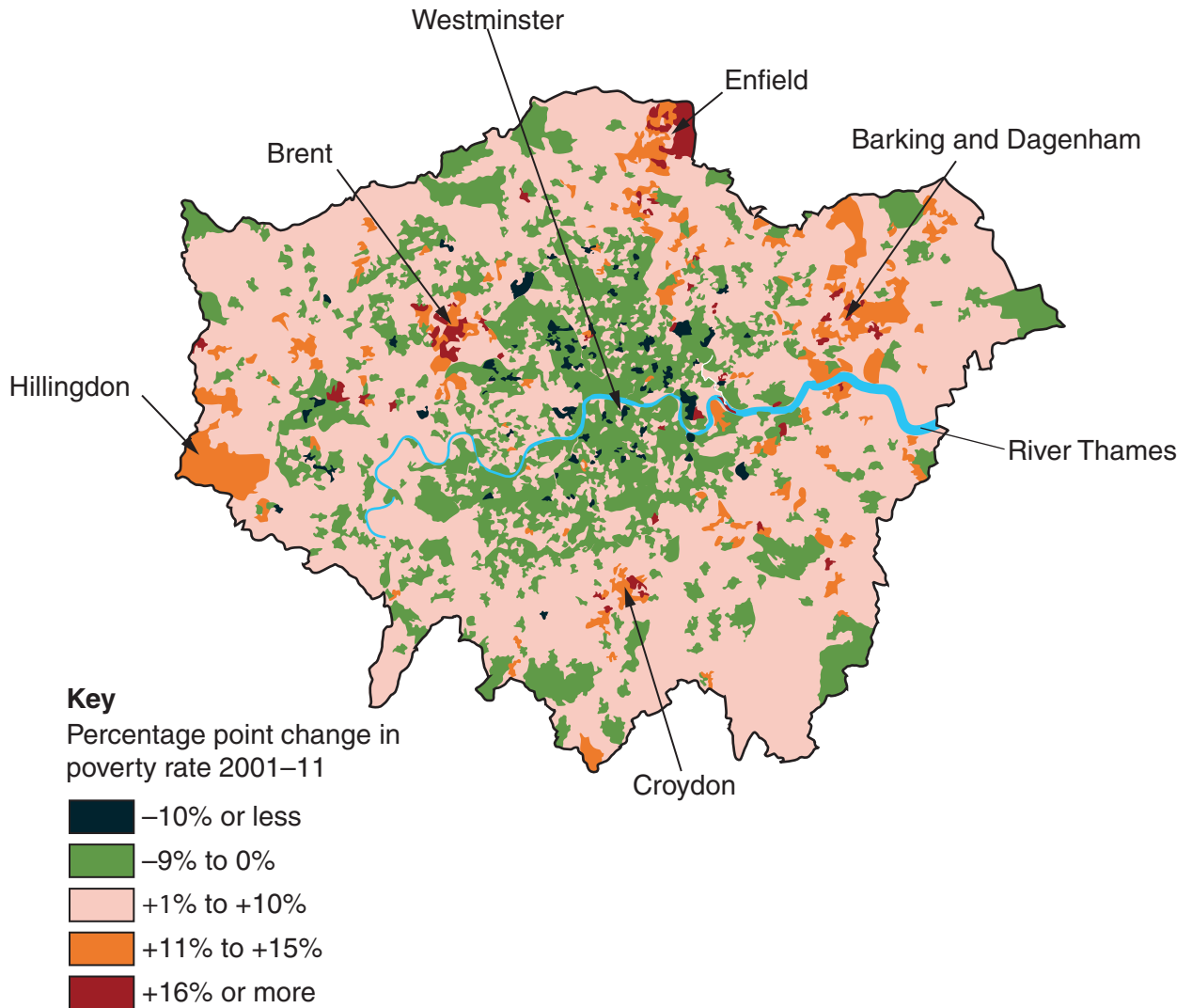


Fig. 8 for Question 6

## Changes in poverty rates in Greater London, 2001–2011



Poverty rate is defined as the number of adults claiming out-of-work benefits divided by the total working population.

Permission to reproduce items where third-party owned material protected by copyright is included has been sought and cleared where possible. Every reasonable effort has been made by the publisher (UCLES) to trace copyright holders, but if any items requiring clearance have unwittingly been included, the publisher will be pleased to make amends at the earliest possible opportunity.

To avoid the issue of disclosure of answer-related information to candidates, all copyright acknowledgements are reproduced online in the Cambridge International Examinations Copyright Acknowledgements Booklet. This is produced for each series of examinations and is freely available to download at [www.cie.org.uk](http://www.cie.org.uk) after the live examination series.

Cambridge International Examinations is part of the Cambridge Assessment Group. Cambridge Assessment is the brand name of University of Cambridge Local Examinations Syndicate (UCLES), which is itself a department of the University of Cambridge.