

**MUSIC**

**9800/02**

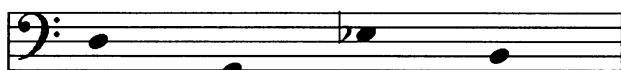
Paper 2 Extended Performing (Improvising)

**May/June 2014**

TEST A



Prepare an improvisation based on the stimulus below. You may read from any of the three clefs shown, and may transpose the pattern to any pitch. You have up to 20 minutes' preparation time, during which you may play or sing as much as you like but may not make any written notes. Your final improvisation should not normally last for more than two minutes.



This document consists of 1 printed page and 1 blank page.

**BLANK PAGE**

---

Permission to reproduce items where third-party owned material protected by copyright is included has been sought and cleared where possible. Every reasonable effort has been made by the publisher (UCLES) to trace copyright holders, but if any items requiring clearance have unwittingly been included, the publisher will be pleased to make amends at the earliest possible opportunity.

Cambridge International Examinations is part of the Cambridge Assessment Group. Cambridge Assessment is the brand name of University of Cambridge Local Examinations Syndicate (UCLES), which is itself a department of the University of Cambridge.

---

**MUSIC**

**9800/02**

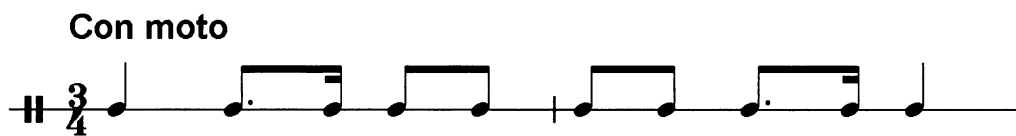
Paper 2 Extended Performing (Improvising)

**May/June 2014**

TEST B

---

Prepare an improvisation based on the stimulus below. You have up to 20 minutes' preparation time, during which you may play or sing as much as you like but may not make any written notes. Your final improvisation should not normally last for more than two minutes.



---

This document consists of **1** printed page and **1** blank page.

**BLANK PAGE**

---

Permission to reproduce items where third-party owned material protected by copyright is included has been sought and cleared where possible. Every reasonable effort has been made by the publisher (UCLES) to trace copyright holders, but if any items requiring clearance have unwittingly been included, the publisher will be pleased to make amends at the earliest possible opportunity.

Cambridge International Examinations is part of the Cambridge Assessment Group. Cambridge Assessment is the brand name of University of Cambridge Local Examinations Syndicate (UCLES), which is itself a department of the University of Cambridge.

---

**MUSIC****9800/02**

Paper 2 Extended Performing (Improvising)

**May/June 2014**TEST C

---

Prepare an improvisation based on the stimulus below. You have up to 20 minutes' preparation time, during which you may play or sing as much as you like but may not make any written notes. Your final improvisation should not normally last for more than two minutes.

If you sing or play a melodic instrument and wish to improvise over the chord sequence, a keyboard player may play these chords for you. The keyboard player may be present during the preparation time, but may not offer any advice.

$B\flat$   $Gm$   $Cm^7$   $F$   $Gm$   $E\flat$   $F^{sus4}$   $F^7$

---

This document consists of **1** printed page and **1** blank page.

**BLANK PAGE**

---

Permission to reproduce items where third-party owned material protected by copyright is included has been sought and cleared where possible. Every reasonable effort has been made by the publisher (UCLES) to trace copyright holders, but if any items requiring clearance have unwittingly been included, the publisher will be pleased to make amends at the earliest possible opportunity.

Cambridge International Examinations is part of the Cambridge Assessment Group. Cambridge Assessment is the brand name of University of Cambridge Local Examinations Syndicate (UCLES), which is itself a department of the University of Cambridge.

**MUSIC**

Paper 2 Extended Performing (Improvising)

TEST D

**9800/02**

**May/June 2014**

Prepare an improvisation based on the stimulus below. You may read from any of the three clefs shown, and may transpose the pattern to any pitch. You have up to 20 minutes' preparation time, during which you may play or sing as much as you like but may not make any written notes. Your final improvisation should not normally last for more than two minutes.

**Andante**

The stimulus consists of three musical staves, each showing the same melodic pattern in G major (one sharp) and 6/8 time. The pattern is: a dotted quarter note (G4), an eighth note (A4), a quarter note (B4), and a half note (C5). The first staff uses a treble clef, the second an alto clef, and the third a bass clef.

This document consists of **1** printed page and **1** blank page.

**BLANK PAGE**

---

Permission to reproduce items where third-party owned material protected by copyright is included has been sought and cleared where possible. Every reasonable effort has been made by the publisher (UCLES) to trace copyright holders, but if any items requiring clearance have unwittingly been included, the publisher will be pleased to make amends at the earliest possible opportunity.

Cambridge International Examinations is part of the Cambridge Assessment Group. Cambridge Assessment is the brand name of University of Cambridge Local Examinations Syndicate (UCLES), which is itself a department of the University of Cambridge.